

a tale about scale

a tale about scale

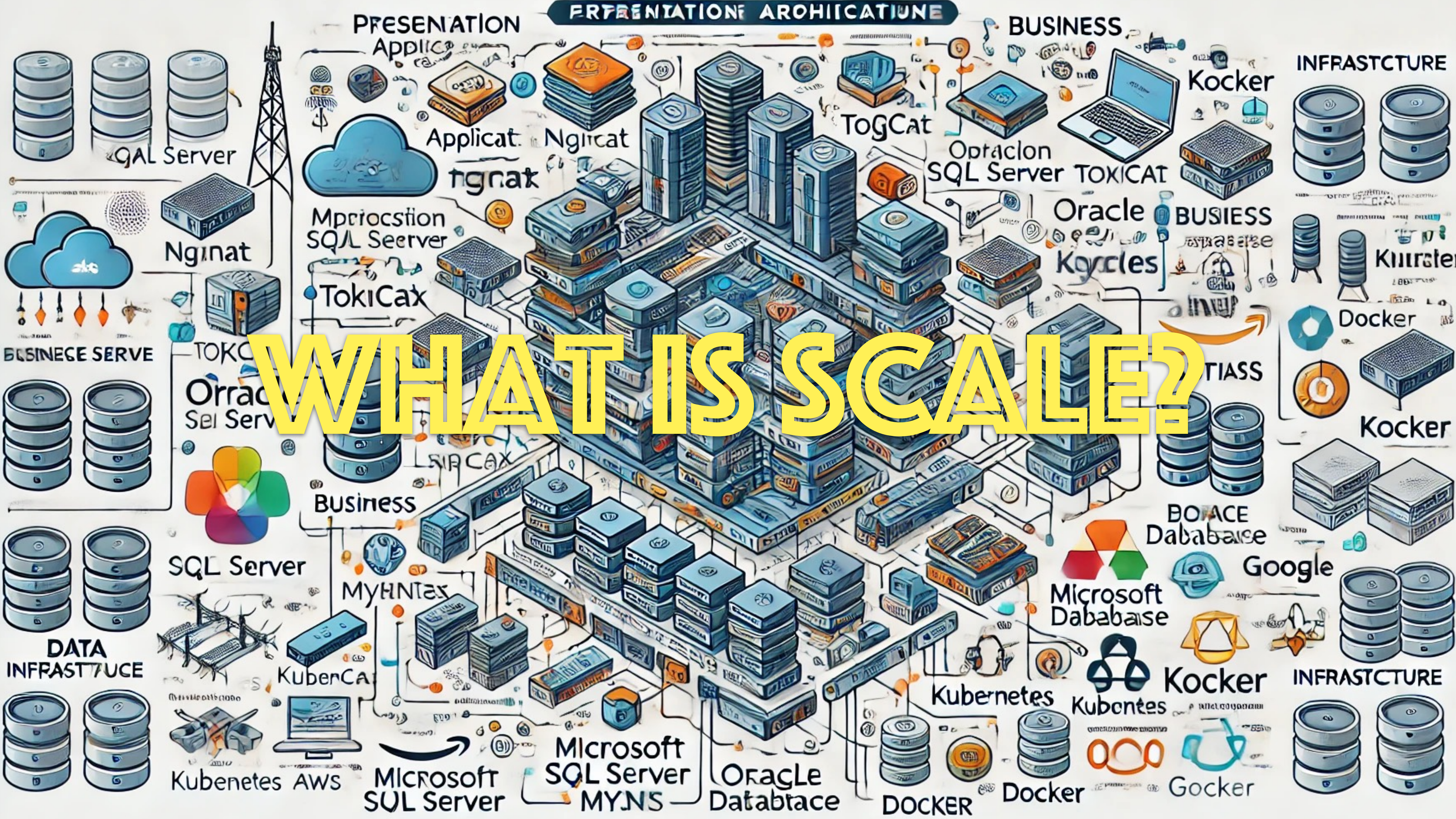
caution: only remotely technical

**I'm talking about
pharo in practice**

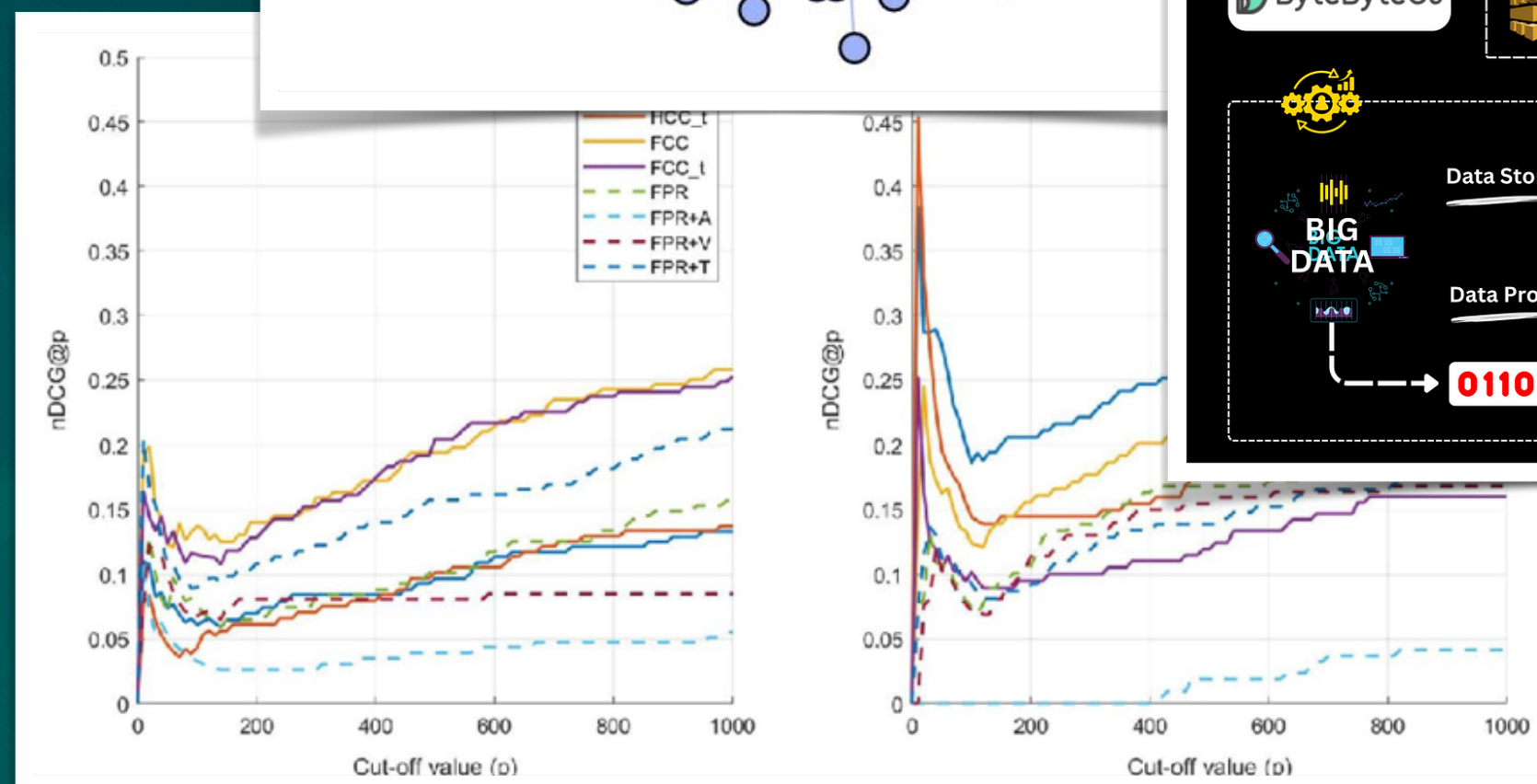
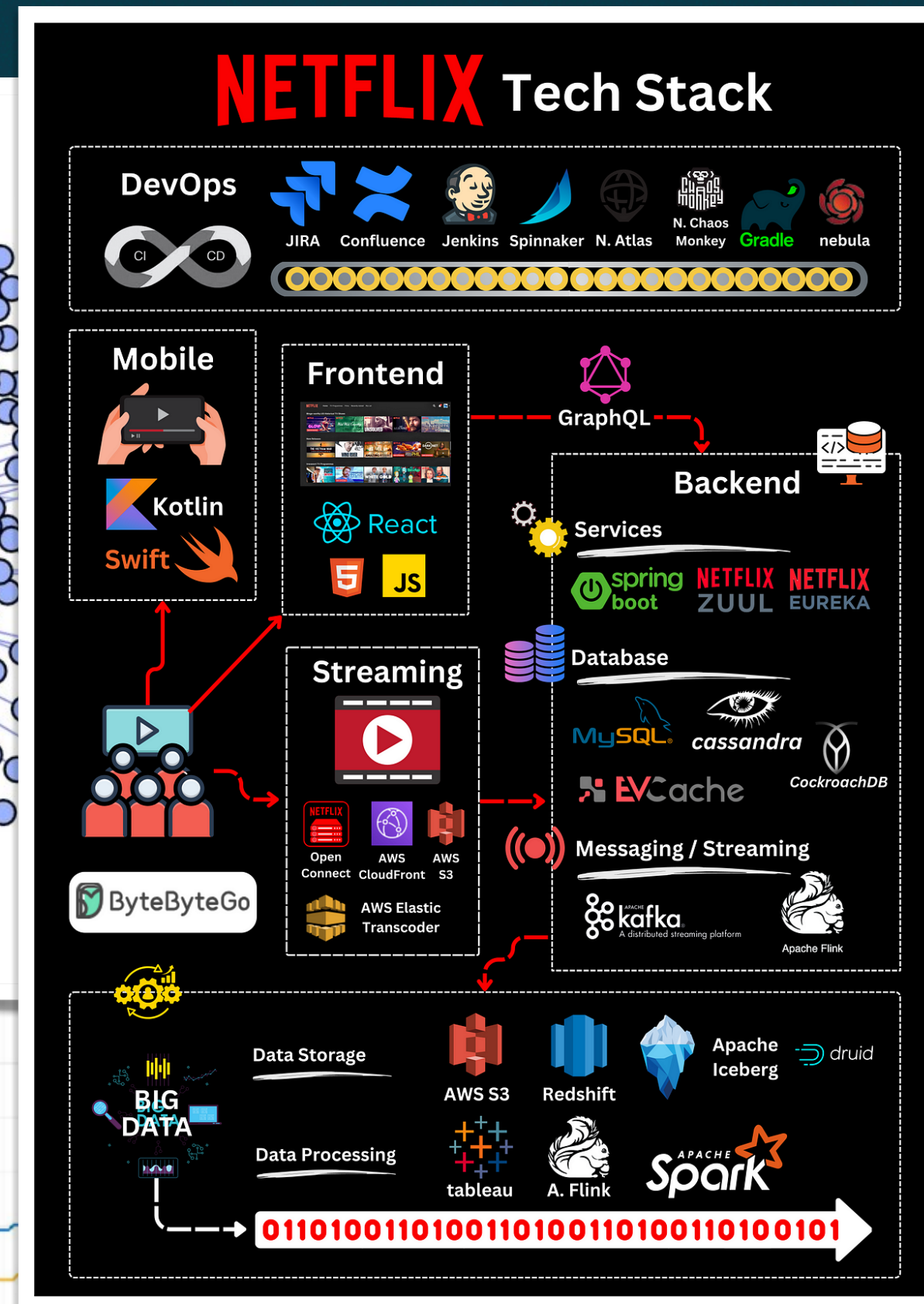
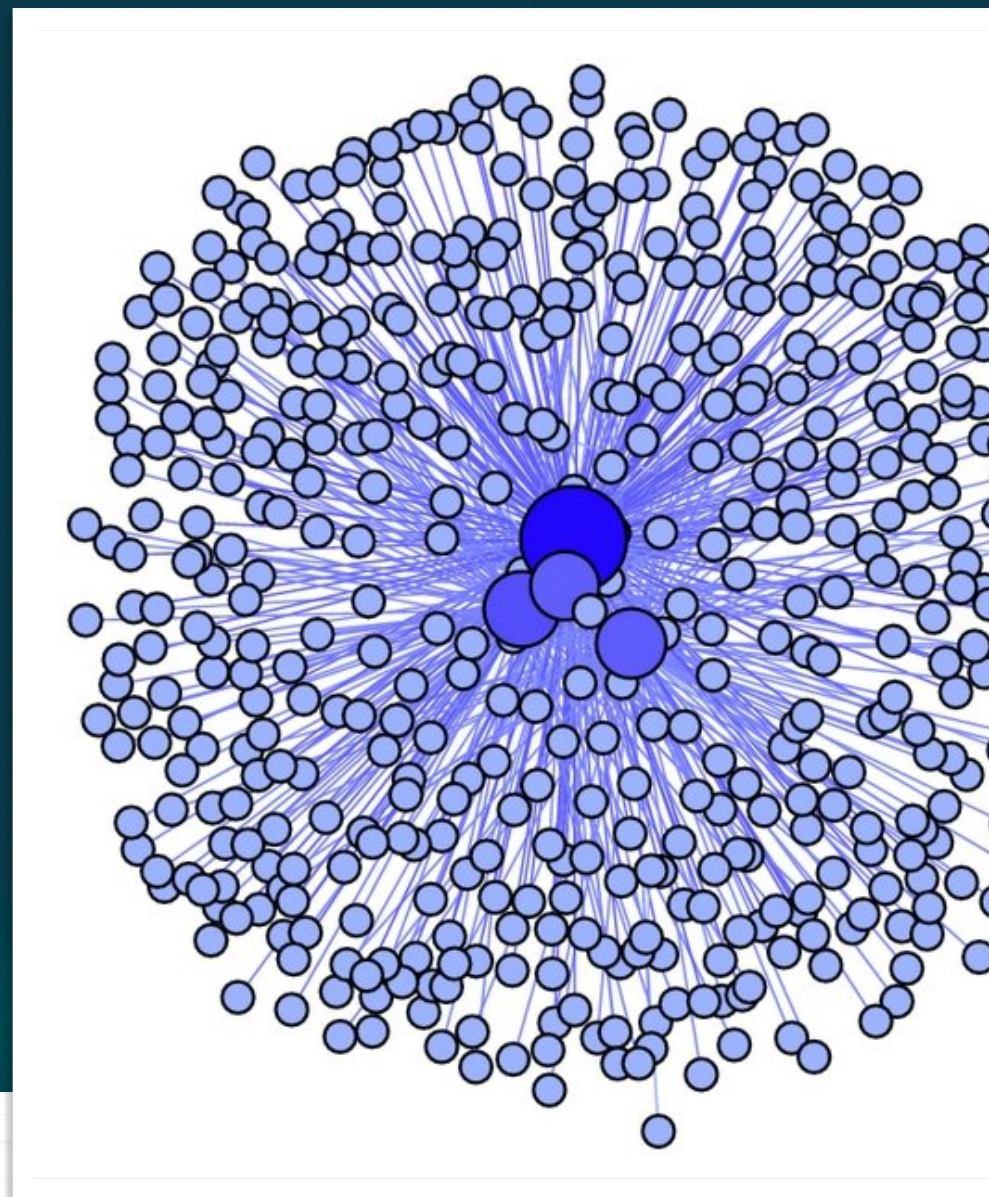
Pharo days 2015

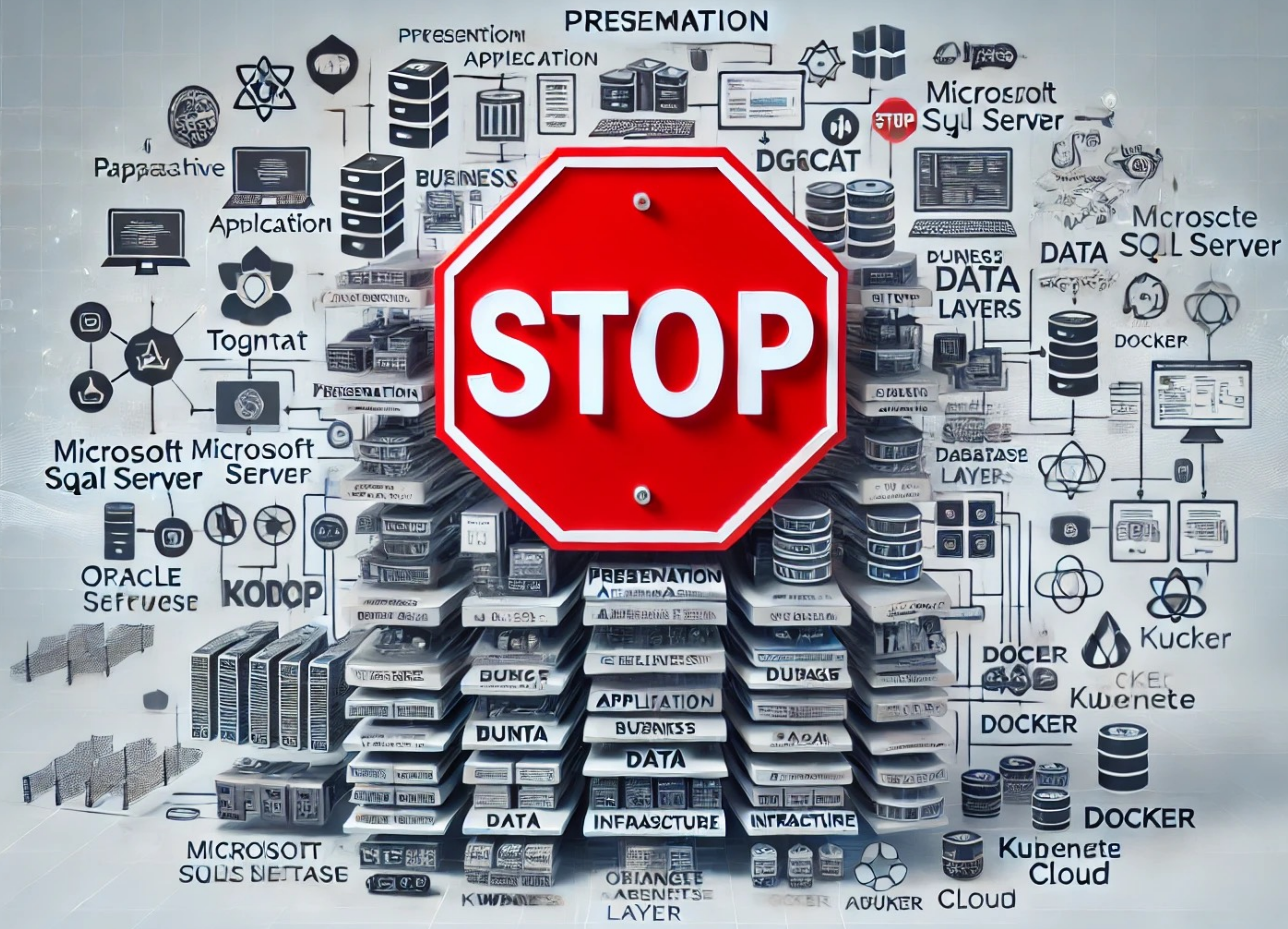


WHAT IS SCALE?



technical scale





keeping focus - CPM model

CPM model

- **C**omputer
- **P**haro
- **M**e





IT'S TIME TO SCALE

SUPER HAPPY!

IT!

SUPER HAPPY!

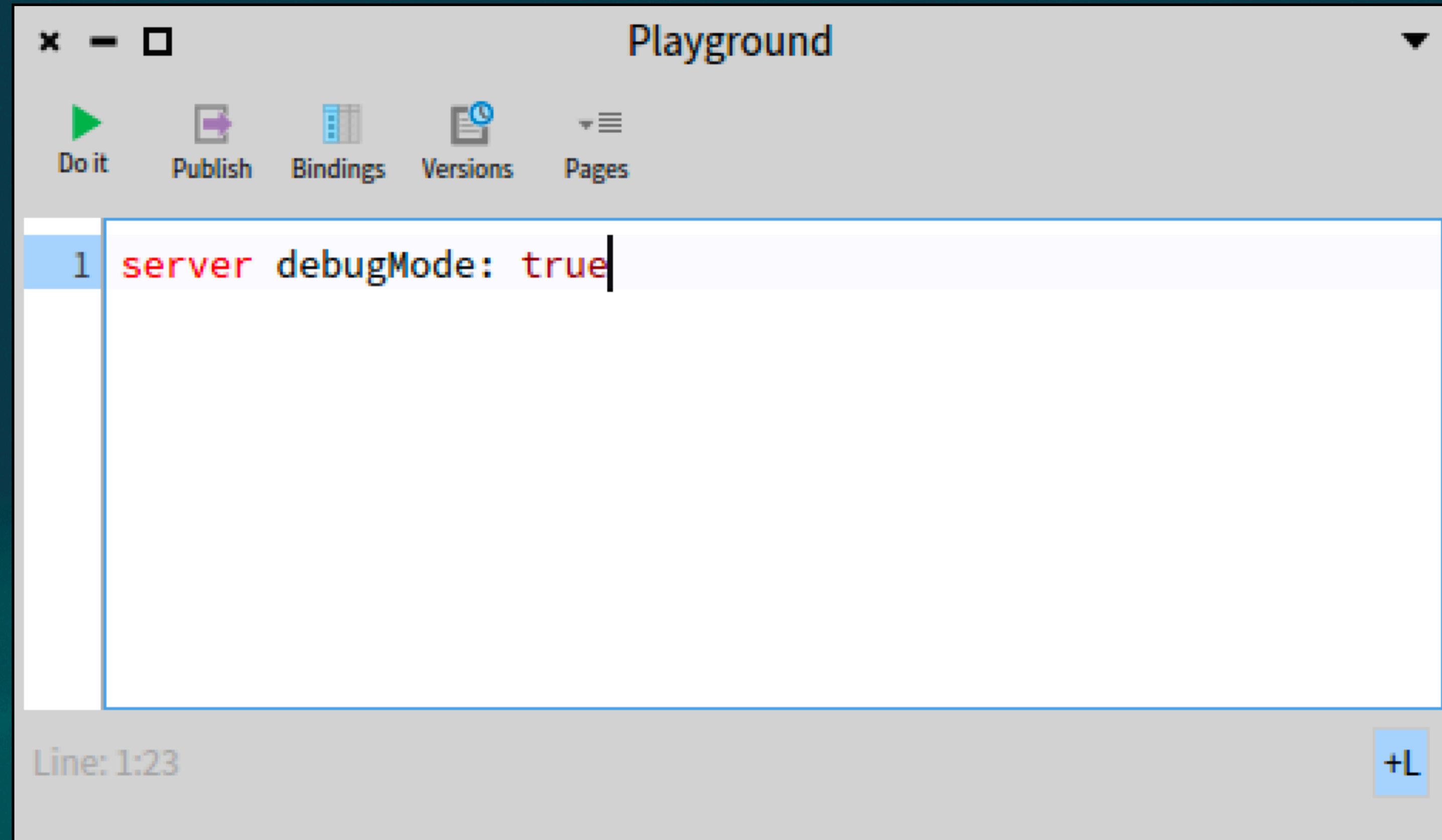
team scale



**two laptops
on a network**



debugging



The image shows a screenshot of a web-based IDE window titled "Playground". The window has a standard macOS-style title bar with a close button (x), a minimize button (-), and a maximize button (square). Below the title bar is a toolbar with five icons and their corresponding labels: a green play button labeled "Do it", a purple document icon labeled "Publish", a blue grid icon labeled "Bindings", a blue document with a clock icon labeled "Versions", and a grey list icon labeled "Pages". The main area is a code editor with a white background and a blue border. The first line of code is highlighted in light blue and contains the text "server debugMode: true" in a red monospace font. The cursor is positioned at the end of the line. At the bottom left of the editor, the text "Line: 1:23" is displayed. At the bottom right, there is a blue button with the text "+L".

```
1 server debugMode: true
```

Line: 1:23 +L

Repeat



DOS attacks





deployment scale

```
-bash 1
local$ scp ApptiveGrid.* backend-server:
local$ ssh backend-server
backend-server$ restart-image.sh
```

```
Playground
Edit bindings list.
Do it Publish Bindings Versions Pages
1 AGModel readStonFromDisk
Line: 1:1 +L
```


deployment scale

- use database
- add migration
- do backups





IT'S I TO TO SEALIE!

BIG SOUND TO UBER DESSAWER!

IT'S TIME TO SCALE

SEACH!

SUNDS UP

TS OME SUCCESIE!

THUMS UP!

GO!

team scale

- issue tracker
- code repository
- development process (pull requests, review,...)
- CI pipeline building artefacts
- artefact management
- deployment scripts





ApptiveGrid

approx. 5000 users

resilience

resilience

- images can crash

resilience

- images can crash
- You need more images

resilience

- images can crash
- You need more images
- You need a load balancer

resilience

- images can crash
- You need more images
- You need a load balancer
- Machines can also fail

resilience

- images can crash
- You need more images
- You need a load balancer
- Machines can also fail
- You need more machines

resilience

- images can crash
- You need more images
- You need a load balancer
- Machines can also fail
- You need more machines
- You need a machine for the load balancer

resilience

- images can crash
- You need more images
- You need a load balancer
- Machines can also fail
- You need more machines
- You need a machine for the load balancer
- The load balancer machine can fail

resilience

- images can crash
- You need more images
- You need a load balancer
- Machines can also fail
- You need more machines
- You need a machine for the load balancer
- The load balancer machine can fail
- You need a backup of the load balancer

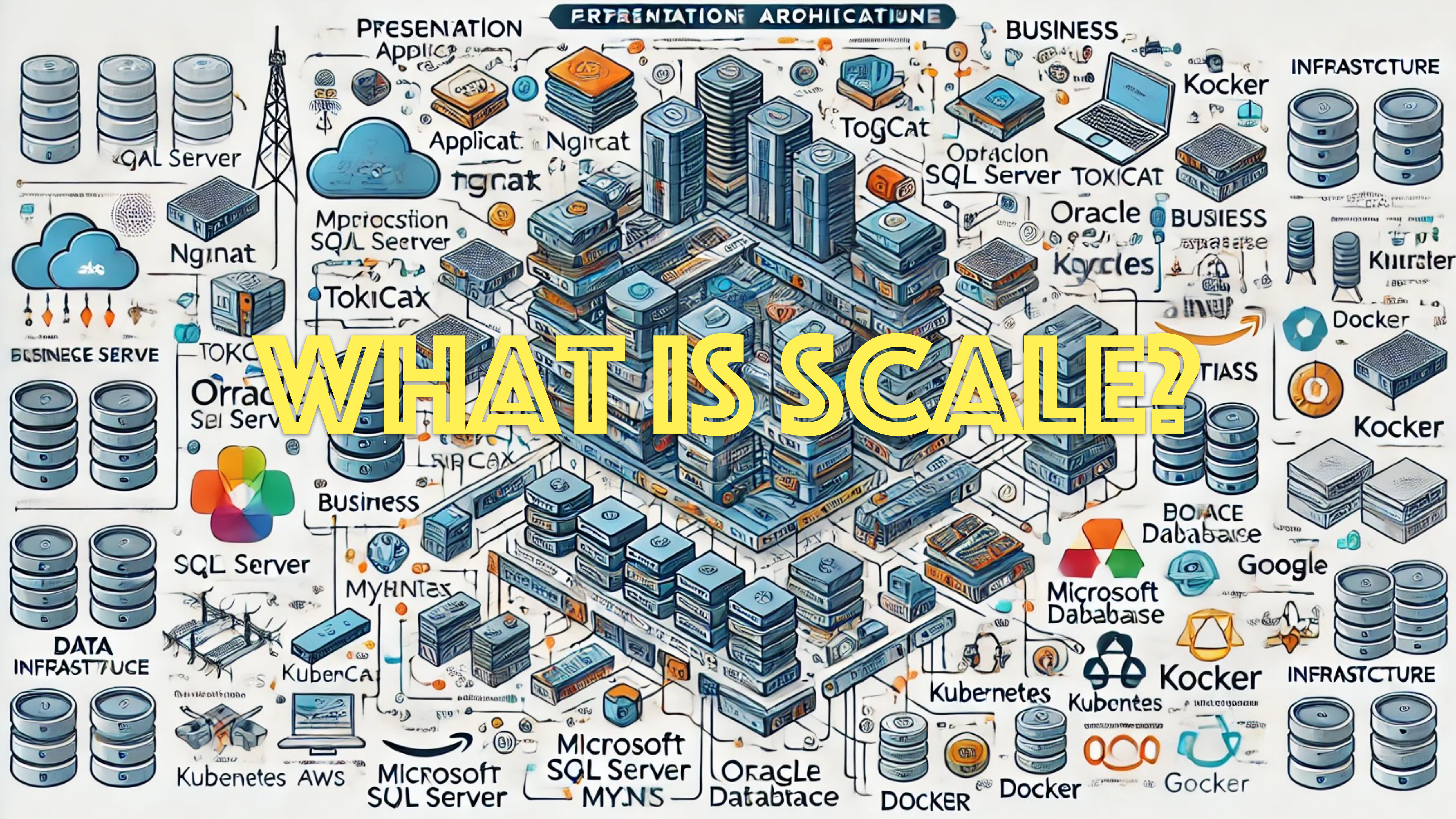
resilience

- images can crash
- You need more images
- You need a load balancer
- Machines can also fail
- You need more machines
- You need a machine for the load balancer
- The load balancer machine can fail
- You need a backup of the load balancer
- ...

resilience

... and so far I didn't even care about logging, monitoring, metrics, ...

WHAT IS SCALE?



When to scale? (Internet version)

technical scale -> success

When to scale? (real version)

success -> technical scale

Conclusion

- scaling is distraction

Conclusion

- scaling is distraction
- no gain without losing something

Conclusion

- scaling is distraction
- no gain without losing something
- when benefits outweigh the drawbacks significantly... scale

Conclusion

- scaling is distraction
- no gain without losing something
- when benefits outweigh the drawbacks significantly... scale
- If not then not!

thank you!



ApptiveGrid

Norbert Hartl

norbert@apptivegrid.de